

## Cabling

The cables will make landfall in Scotland in Long Haven Bay, south of Peterhead. Horizontal Directional Drilling (HDD) will be used to provide ducted cable runs from the cliff tops of Long Haven Bay out into the North Sea, connecting the onshore and offshore cables. Survey work has identified a suitable exit point at approximately 100m offshore.

The cables will be protected from scour and fouling predominantly through burial. Where burial is not possible due to ground conditions or existing subsea infrastructure, additional protection will be installed to protect the cables, such as rock berms, mattresses or ducting. We would also like your input on their design of the additional protection measures, in order to minimise impacts on local marine users.



UK Interconnector Converter Station

## Drop-In Sessions

We will be running two drop-in sessions in January to gather information and to hear the views of the marine community. Please do come and see us if you can:

**Thursday 18th January, 10am – 3.30pm, Fisherman's Mission, Peterhead**

**Friday 19th January, 10am – 3.30pm, Fisherman's Mission, Peterhead**

If you're not able to make it along on either of these days, please let us know and we can send you a link to our online questionnaire or we can arrange a phone conversation if you would prefer.

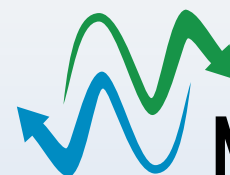
## Contact Details

Freepost RTKY-CSZT-UXGY, NorthConnect, Lochview of Duntelchaig, Farr, Inverness, IV2 6AW.

Fisheries Liaison Officer: Alan Wood Addison, [FLO@northconnect.no](mailto:FLO@northconnect.no) 07734 033742

Communications Manager: Fiona Milligan, [fiona.milligan@northconnect.no](mailto:fiona.milligan@northconnect.no) 07825 744712

For more information on the project please visit: [www.northconnect.no](http://www.northconnect.no)



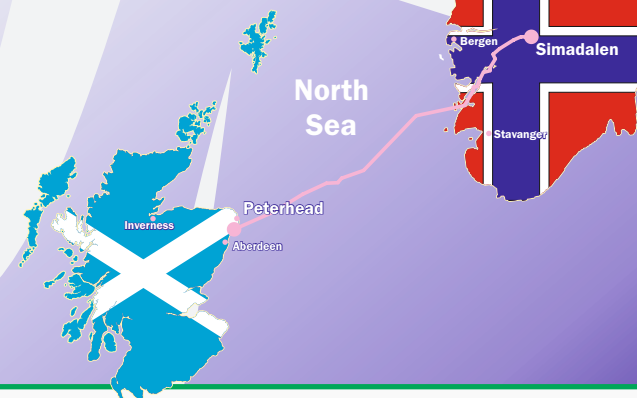
# NORTHCONNECT

CONNECTING RENEWABLES

## NorthConnect

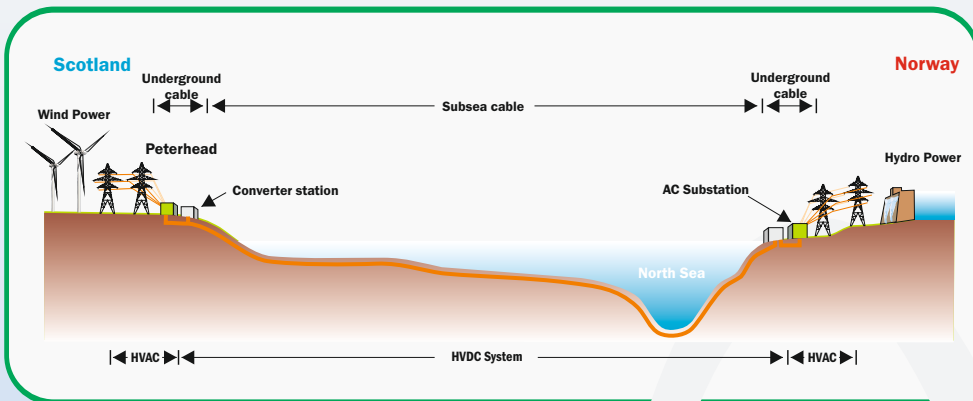
NorthConnect is a commercial joint venture set up to develop, build, own and operate a high voltage electricity 'Interconnector'.

The Interconnector will provide a 1.4 gigawatt two-way transmission link between Scotland and Norway.



## Marine Users Update - January 2018

The UK nearshore marine survey operation, within the Buchan Ness to Collieston Special Protection Area, was undertaken in December 2016 to avoid the bird breeding season. The wider marine surveys across the North Sea were completed during the summer of 2017. The results from the survey operations will help inform the cable corridor design. However, we also need the input of marine users – fishermen, ferry operators, freight operators and recreational users to make sure the construction and operation of the interconnector cause as little disruption as possible. We will be running drop-in sessions later in January and we do hope to see you there.

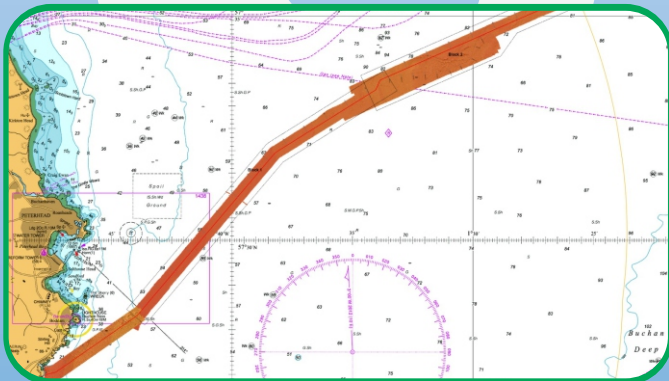


## Project Status - January 2018

NorthConnect received planning permission in September 2015 for the Interconnector Converter Station on the 'Fourfields' site near Boddam, Peterhead and the link to the Peterhead substation. Since then, survey work has been ongoing to inform the planning and marine licensing process for the cables that will transmit electricity between Scotland and Norway, under the North Sea.

Planning permission will be sought from Aberdeenshire Council for the onshore cable corridor to the converter station, and a Marine Licence will be sought from Marine Scotland for the cable corridor in UK Waters. As part of this process we will be undertaking a programme of public consultation and completing an Environmental Impact Assessment (EIA).

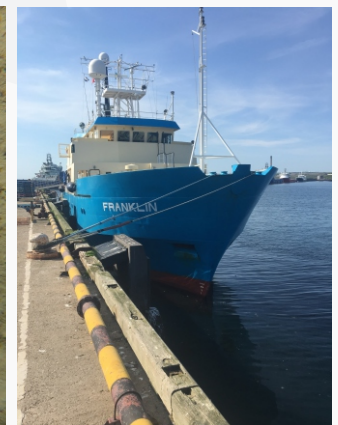
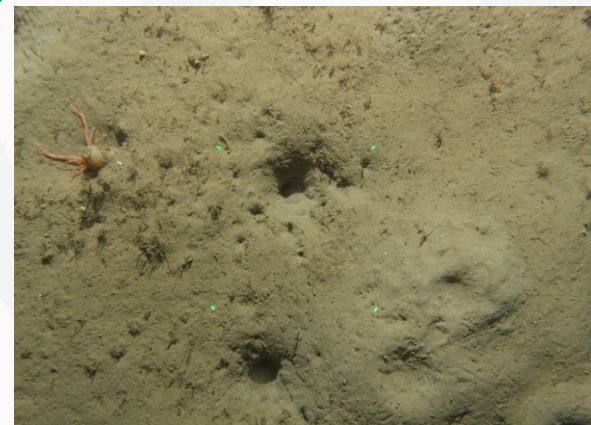
This consultation will begin in January with a series of 'drop-in' sessions for marine users which will feature a questionnaire to help inform the cable corridor design. Subsequent community open days will take place for anyone who wishes to find out more about the project and discuss it in more detail.



## Subsea Surveys

The marine survey included geophysical, geotechnical, and benthic ecology investigations along a 500m wide corridor. The geophysical investigations utilised multi-beam echo-sounders, side scan sonar, magnetometer, sub-bottom profiling and underwater cameras. The geotechnical investigations incorporated vibro coring, and cone penetration tests, while grab samples were taken for the benthic and chemical analysis. All survey operations were conducted using specialised offshore survey vessels, and included the use of remotely operated vehicles and towed equipment.

The marine survey results are now being interpreted and will provide information to support the assessment of marine effects on commercial fisheries, ecology, seabed and water quality, and archaeology for inclusion in the EIA. The outputs of the survey will also aid in the identification of offshore cable protection requirements as well as assessing appropriate installation techniques.



## NorthConnect Legacy Fund

The first round of awards from the NorthConnect Legacy Fund has recently been made, with thirteen out of twenty applicants being awarded funding. These include two marine based projects; the Aberdeenshire Sailing Trust and the Peterhead Sea Cadets. The Legacy fund will help Aberdeenshire Sailing Trust purchase a new outboard engine for their safety boat and the Peterhead Sea Cadets will be replacing their aging waterproof jackets, allowing both groups to continue their great work, safely introducing youngsters to the sea. The next round of funding, expected once again to be a sum of £10,000, will open in the Autumn of 2018.